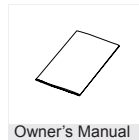
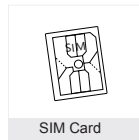
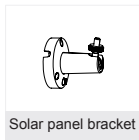
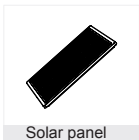
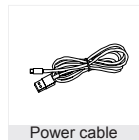
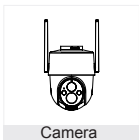


**Uniden®**

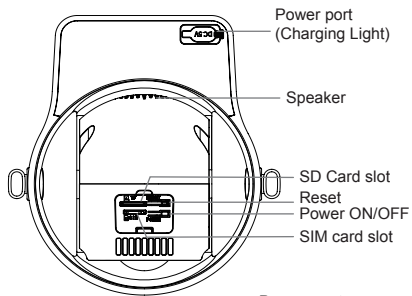
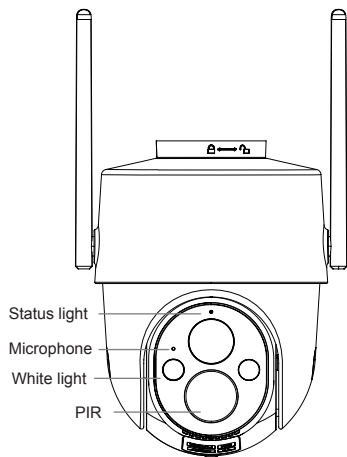
**App Cam Solo  
X2K 4G PT Kit**

**Quick Start Guide**

# What's in the Box



# General Introduction



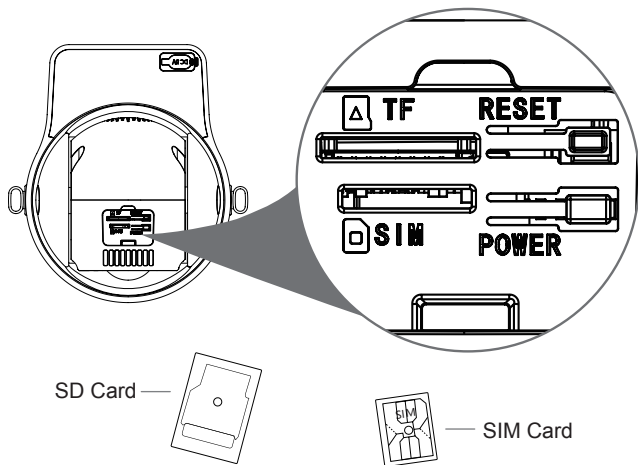
## Power port:

- Charging.
- Fully Charged.

## General Introduction

Component	Description
Power Port	DC 5V/1A
Power ON/ OFF	Press and hold Power button for 3 seconds to Turn ON/ OFF camera
Status light	<b>Red light flashes slowly:</b> Camera start up and wait for connection. <b>Red light flashes fast:</b> Connecting the network. If the red light flashes fast for a long time, try to reinsert the SIM card or reset the camera. <b>Red and blue lights flash alternately:</b> Unable to connect to the network. Please check whether the SIM card is installed correctly, and confirm whether the SIM card has 4G mobile data. <b>Blue light flashes:</b> The app is waiting to connect to the camera. <b>Solid blue light:</b> Successfully connected.
SD card slot	Support local SD Card storage (up to 256GB)
Reset	Press and hold for 5 seconds to reset the camera
Battery	10,400mAh rechargeable Li-h batteries.

# General Introduction

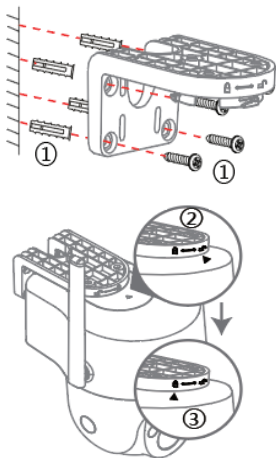


# Camera Installation

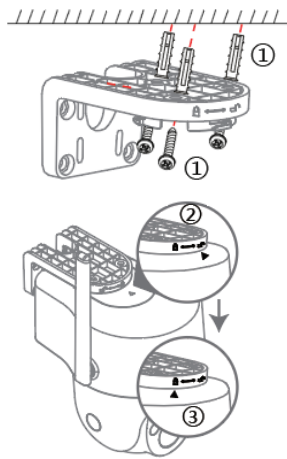


\* Before installation, please check the installation positions that will not affect the connection and usage, especially to ensure that the solar panel can be fully illuminated.

Wall Mount

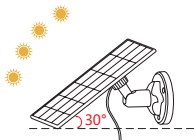
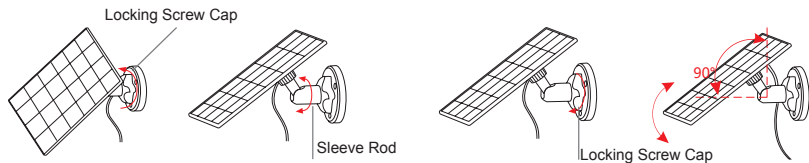
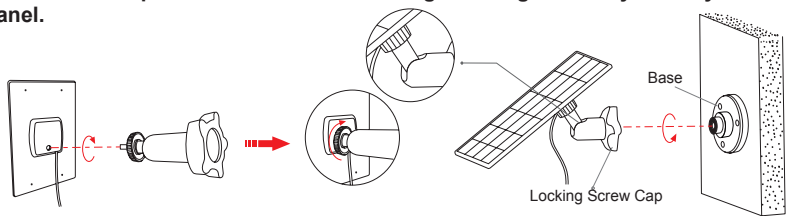


Celling Mount

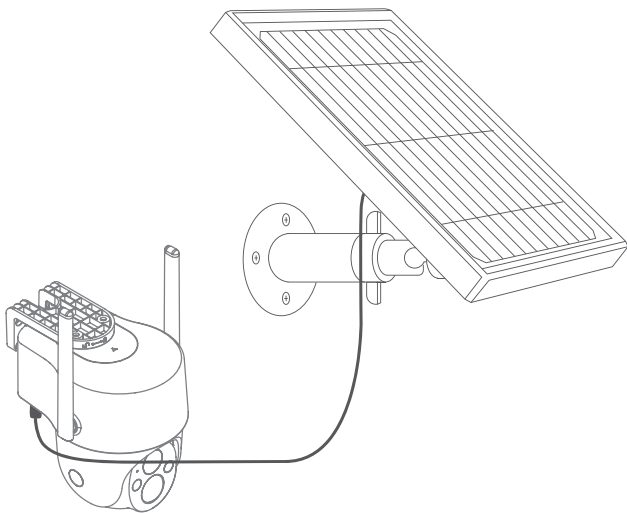


# Solar Panel Installation

Please select a position with the most sunlight throughout the year for your solar panel.



## Solar Panel Installation





## Install My Uniden + App



### Download the My Uniden + App:

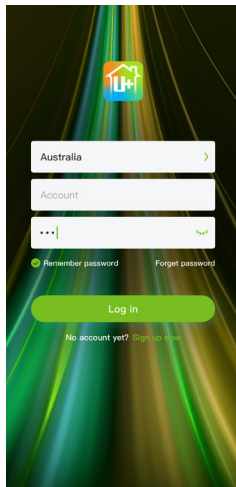
- Apple Store: “My Uniden +” (for iOS), download and install the app.
- Google Play Store: “My Uniden +” (for Android), download and install the app.



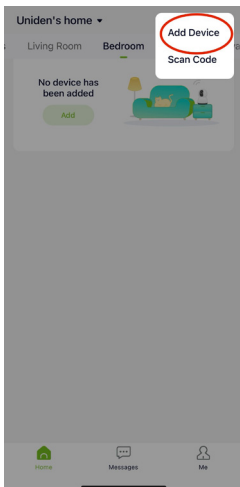
Support Alexa & Google Home

## Set up the Camera

1. Register your account, tap “Sign up now” to create your account.
2. After you have the account, please log in.

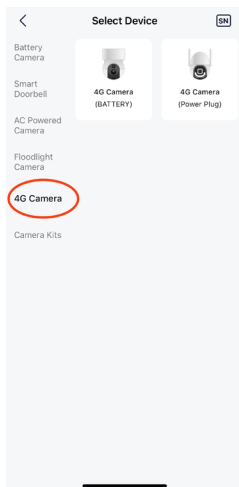


## Add Camera to My Uniden + App



**1**

Tap "+" on the right top corner to add device.



**2**

Tap "4G Camera", choose "4G Camera (BATTERY)", then Scan the QR code on the back of the camera.

**Please follow the prompt tone to configure the camera**

# Add Camera to My Uniden + App

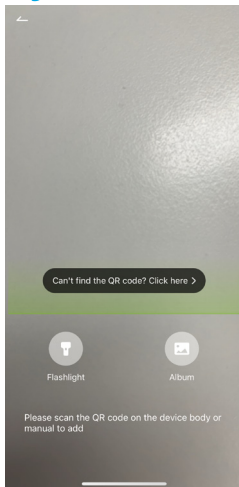
Please follow the prompt tone to configure the camera

“ Please Insert SIM Card. ”

“ Hold the device power button to start the device. ”

**Red light flashes slowly:**  
Camera start up and wait for connection.

More light settings, please refer to p3- **Status light**.



3

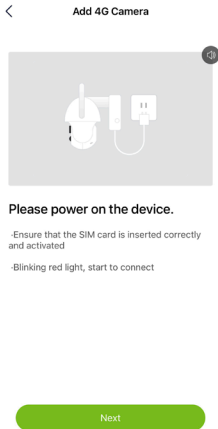
**If you can't scan QR code, please follow step4.**



4

“ Can't find the QR code? Click here> ”

# Add Camera to My Uniden + App



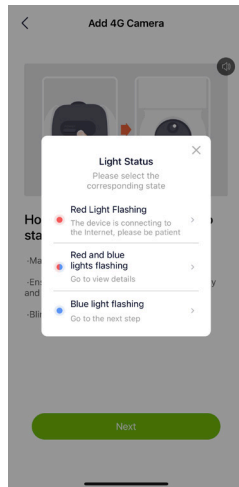
5

**Power on the device with solar panel.**



6

“ Connection successful , waiting to add to app ”



7

# Add Camera to My Uniden + App

## Operation Instructions



Please remove all film from the lens. Tap Next to show a QR code, and let your device scan the code. Keep your phone 5-8 inches from the lens.

Next

8

“Scan the QR code from the App.”

”

## Connect Device



02:06

- Make sure the device has enough power
- Ensure that the SIM card is inserted correctly and activated
- Ensure that the SIM card signal of the device is in good condition



9

“Keep your phone 15~25cm from the lens.”

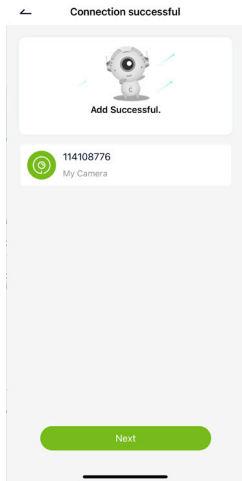
”

“Connection successful.”

”

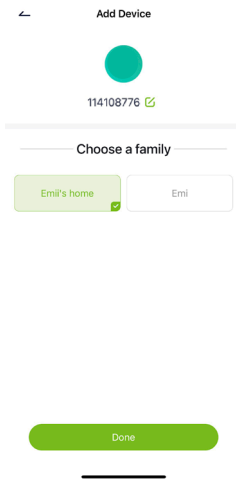
12

# Add Camera to My Uniden + App



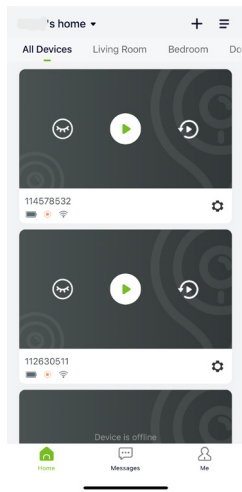
10

“Connection successful.”



11

Click  to edit Camera name.



12

13

# Camera Specification

## • PIR Sensor Detecting Distance

The PIR detection range can be customized to meet your specific needs. You can refer to the following table to set it up in the My Uniden + App.

Sensitivity	Value	Detecting Distance (For moving and living things)	Detecting Distance (For moving vehicles)
Low	1-4	Up to 4 meters	Up to 4 meters
Mid	5-7	Up to 6 meters	Up to 6 meters
High	8-10	Up to 8 meters	Up to 8 meters

**Note:**

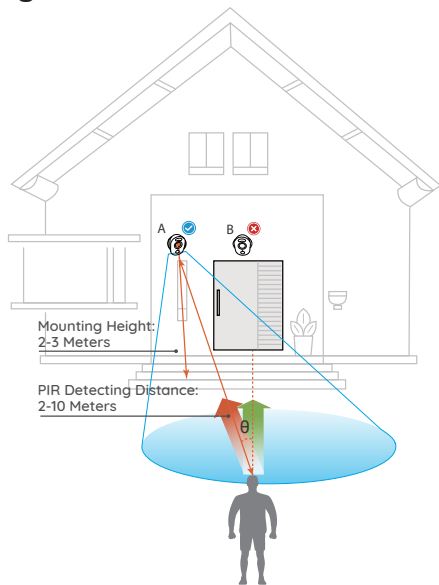
Higher sensitivity offers longer detecting distance, but it would lead to more false alarms. You are advised to set up the sensitivity level to “1-4” or “5-7” when you install the camera outdoors.

## • PIR Sensor Installation Angle

Please install the camera 2-3 meters above the ground. The detection range of the motion sensor would be maximized at such a height.

For effective motion detection, please install the camera angularly and the angle between the PIR sensor and the detected object must be larger than  $10^\circ$ .

Due to the limitation of PIR sensor detection, please note that **if a moving object approaches the PIR sensor vertically (the direction of the orange arrow in the image)**, the camera may fail to detect motion.







## Important Notes for Reducing False Alarms

### For reducing false alarms, please note that:

- Do not install the camera facing any objects with bright lights, including sunshine, bright lamplights, etc.
- Do not place the camera too close to a place where there are frequently moving vehicles. The recommended distance between the camera and the vehicle is 15 meters
- Stay away from the outlets, including the air conditioner vents, humidifier outlets, the heat transfer vent of projectors, etc.
- Do not install the camera facing the mirror.
- Do not install the camera where there are strong winds
- Keep the camera at least 1 meter away from any wireless devices, including Wi-Fi routers and phones in order to avoid wireless interference.

# Troubleshooting

## Camera is not turning on

If your camera is not turning on, please apply the following solutions:

- Make sure you press and hold the power button on for 3 seconds.
- Charge the camera with a DC 5V/1A solar panel.

## Fail to scan the QR code on the phone

If the camera failed to scan the QR code on your phone, please apply the following solutions:

- Remove the protective film on the lens of the camera.
- Wipe the camera lens with a dry paper/ towel/tissue.
- Vary the distance (about 30cm) between your camera and the mobile phone which enables the camera to focus better.
- Increase the phone screen brightness and try scanning the QR code.

## Fail to identify the Micro SD card

If the camera failed to identify the Micro SD card, please apply the following solutions:

- Insert Micro SD card with device powered off.
- Format Micro SD card in FAT32.
- Require good Internet connection.

## Specifications

	<b>Model</b>	<b>App Cam Solo X2K 4G PT Kit</b>
<b>Video &amp; Audio</b>	Image Sensor	1/2.8" CMOS Image Sensor
	Video Resolution	2304 x 1296 (3.0Megapixel) 25fps
	Video Compression	H.265
	Viewing Angle	Pan: 0°~355°, Tilt: -90°~30°
	PIR Detecting Distance	Up to 10 meters
	PIR Detecting Angle	Horizontal: 120°
	Night Vision	Up to 10 meters
	Audio	Two-way talk
	Alerts	PIR
	<b>Network</b>	Network Standard
Max. User Access		4
Mobile Phone OS		iOS 9 or later, Android 5 or later
<b>Hardware</b>	Battery	Lithium rechargeable battery, 10400mAh
	Storage	Supports up to 256GB micro SD card/Cloud storage
<b>Other Parameters</b>	Temperature	Operating Temperature : -20°C~+50°C
	Size & Weight	134 x 124 x 138mm, 637g
	Waterproof Level	IP65 Weatherproof

# WARRANTY

## Uniden App Cam Solo X2K 4G PT Kit

### Important:

**Satisfactory evidence of the original purchase is required for warranty service.** Please refer to our Uniden website for any details or warranty durations offered in addition to those contained below.

### Warrantor:

The warrantor is Uniden Australia Pty Limited ABN 58 001 865 498 ("Uniden Aust").

**Terms of Warranty:** Uniden Aust warrants to the original retail purchaser only that the Uniden App Cam Solo X2K 4G PT Kit ("the Product"), will be free from defects in materials and craftsmanship for the duration of the warranty period, subject to the limitations and exclusions set out below.

**Warranty Period:** This warranty to the original retail purchaser is only valid in the original country of purchase for a Product first purchased either in Australia or New Zealand and will expire, as indicated below, from the date of original retail sale.

Product	1 Year
Accessories and Battery	90 Days

If a warranty claim is made, this warranty will not apply if the Product is found by Uniden to be:

- A. Damaged or not maintained in a reasonable manner or as recommended in the relevant Owner's Manual;
- B. Modified, altered or used as part of any conversion kits, subassemblies or any configurations not sold by Uniden Aust;
- C. Improperly installed contrary to instructions contained in the relevant Owner's Manual
- D. Repaired by someone other than an authorized Uniden Repair Agent in relation to a defect or malfunction covered by this warranty; or
- E. Used in conjunction with any equipment, parts or a system not manufactured by Uniden.

**Parts Covered:** This warranty covers the Product and included accessories.

**User-generated Data:** This warranty does not cover any claimed loss of or damage to user-generated data (including but without limitation phone numbers, addresses and images) that may be stored on your Product.

**Statement of Remedy:** If the Product is found not to conform to this warranty as stated above, the Warrantor, at its discretion, will either repair the defect or replace the Product without any charge for parts or service. This warranty does not include any reimbursement or payment of any consequential damages claimed to arise from a Product's failure to comply with the warranty.

Our goods come with guarantees that cannot be excluded under the Australian Consumer Law. You are entitled to a replacement or refund for a major failure and for compensation for any other reasonably foreseeable loss or damage. You are also entitled to have the goods repaired or replaced if the goods fail to be of acceptable quality and the failure does not amount to a major failure.

This warranty is in addition to and sits alongside your rights under either the COMPETITION AND CONSUMER ACT 2010 (Australia) or the CONSUMER GUARANTEES ACT (New Zealand) as the case may be, none of which can be excluded.

**Procedure for Obtaining Warranty Service:** Depending on the country in which the Product was first purchased, if you believe that your Product does not conform with this warranty, you should deliver the Product, together with satisfactory evidence of your original purchase (such as a legible copy of the sales docket) to Uniden. Please refer to the Uniden website for address details. You should contact Uniden regarding any compensation that may be payable for your expenses incurred in making a warranty claim. Prior to delivery, we recommend that you make a backup copy of any phone numbers, images or other data stored on your Product, in case it is lost or damaged during warranty service.

## **UNIDEN AUSTRALIA PTY LTD**

Phone number: 1300 366 895

Email address: [custservice@uniden.com.au](mailto:custservice@uniden.com.au)

**THANK YOU FOR BUYING A UNIDEN PRODUCT**

© 2024 Uniden Australia Pty Limited v1.1