

Uniden®

iGO CAM 60

**Accident CAM
Vehicle Recorder**

For more exciting new products please visit our website:
Australia: www.uniden.com.au

OWNER'S MANUAL

Important Safety Instructions



NOTE

Uniden does not represent this product to be waterproof. Do not expose this product to Rain or Moisture.



NOTE

This product is intended for use in a motor vehicle. Don't install the device where it will block the driver's view of the road (including the mirrors!) or the deployment of the airbag.



NOTE

Keep your attention on the road! Don't try to operate or focus on any device while driving. If you have to concentrate on a device, pull off the road for a few minutes.



NOTE

Ensure that the camera lens is kept clean and there is nothing blocking the lens.



NOTE

Don't leave the device in direct sunlight for a long period of time or where the temperature could go above 60°C.



NOTE

You should examine, check and/or verify the device at least once a month including the associated SD card, to ensure the recording are working properly.



NOTE

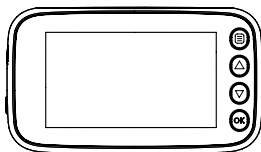
Never attempt to disassemble, repair or make any modifications to your device.

CONTENTS

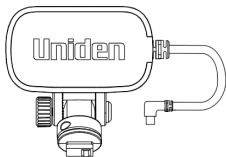
Important Safety Instructions	2
What's In The Box	4
Controls & Indicators	5
Installation	7
Operation	8
Micro SD Card	8
Battery Information	8
Power On	9
Power Off	9
Record Mode	10
Playback Mode	13
General Settings	14
Connecting to a PC	15
GPSTrackerPlayer.....	15
SpecialFeatures.....	17
Troubleshooting	18
Important Information	19
Warranty	20

What's In The Box

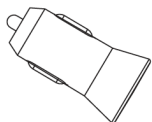
Make Sure These Items Arrived in the Box



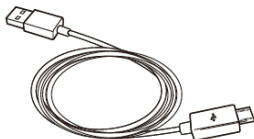
iGO CAM 60



**GPS Sticker
Mount Bracket**



USB Car Charger

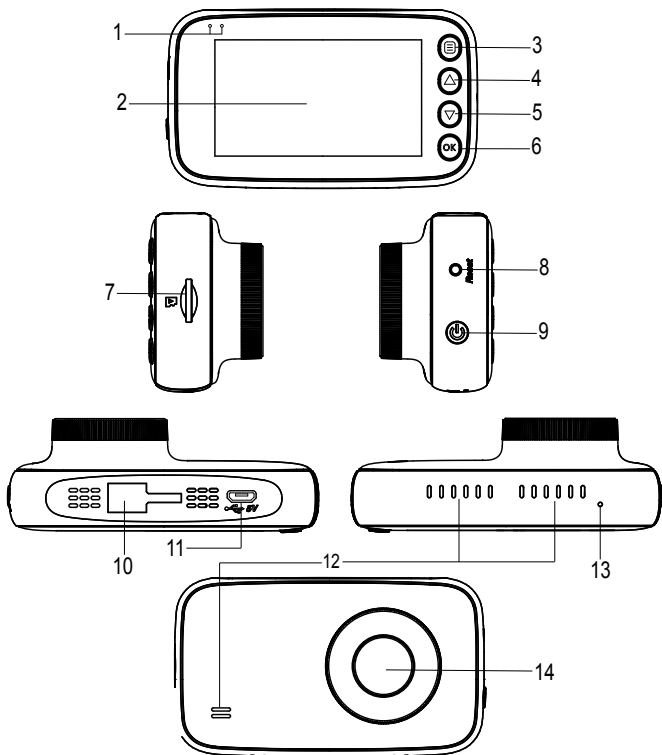


USB Charging Cable

- **Owner's Manual**

- If any item is missing or damaged, contact your place of purchase immediately. ***Never use damaged products!***
- Need help? Get answers at our website:
www.uniden.com.au for Australian model.

Controls & Indicators



Ref	Component	Description
1	LED	RED - Flashing indicates recording. BLUE - Indicates charging battery.
2	LCD Screen	
3	MENU	Recording Mode: Start emergency recording . Record Mode: Enter Settings menu. Playback Mode: Return to previous screen/mode.
4	UP ▲	Recording Mode: Turn on/off audio recording. Record Mode: Enter Playback mode. Playback Mode: Toggle to previous file.
5	DOWN ▼	Recording Mode: Take a snapshot. Record Mode: Take a snapshot. Playback Mode: Toggle to next file.
6	OK	Recording Mode: Stop video recording. Record Mode: Start video recording. Playback Mode: Confirm Selection/Play/Pause/ Resume.
7	Card Slot	Insert micro SD Card (up to 128GB min class 10).
8	Reset	If the device fails to operate, try resetting the device. Press the reset button using a fine pen or paperclip.
9	POWER	Press & hold for 3 seconds to turn power on. Press & hold for 5 seconds to turn power off.
10	Bracket Slot	Slot in the GPS sticker mount bracket.
11	Micro USB Port	Connect micro USB cable & charge battery. Connect to PC for data (SD card) transfer (USB data cable is not supplied).
12	Speaker	
13	MIC	Records sound.
14	Lens	

*Record Mode is when the device is not recording.

*Recording Mode is when the device is recording.

Installation

Location

To have a better view, try to install at the center of the windshield. Make sure the lens is located in a place where the windshield wiper can clean the window to ensure view is clear.

Make sure the device is not installed in a place where it will interfere with the safety bag. Make sure the GPS will not be obstructed by the windshield's sun control film (window tint).

Installing the Mount onto the Windshield

1. Slide the sticker mount bracket into the device bracket slot and make sure it fits tightly.
2. Clean the area you desire to have the dash cam placed before sticking the device.
3. Peel off the sticker protective film from the 3M sticker
4. Press and apply force on the mount onto the windshield behind the rear-view mirror.
5. Adjust the viewing angle of the camera by loosening the screw of the bracket and fasten it back to secure the viewing angle. We recommend the camera should point slightly downwards $\sim 10^\circ$ below eye level.

GPS Reception information

Surrounded with tall buildings, in a tunnel or poor weather conditions may result in poor GPS reception or even lose GPS signal. Over-tinting or a rain sensor on the windshield can affect GPS reception.

If the signal is unstable even when you are driving, please try changing the installation spot of your dash camera. For the first time use, it takes about 15~20 minutes to get GPS signal, and after that, it normally takes about 3 minutes.



NOTE

Sticker mount is difficult to remove after it is installed and will not stick well on a curved/textured or wet surface.



NOTE

Do not install the product in a location where it can obstruct the driver's field of vision.

Operation

Micro SD Card



NOTE

A compatible micro SD card (not supplied) is required to record and store videos and photos.

The device can support micro SDHC cards (High Capacity SD) up to 128GB in capacity. A micro SDHC card of at least 8GB capacity and minimum Class 10 speed is recommended.

Insert a formatted micro SD card gently in the slot at the side of the device. To remove the card from the slot, press the edge of the SD card inwards for it to pop out and then pull it out of the slot.

Uniden only recommends using good quality MLC/SLC micro SD cards. Please ensure that the SD card used is rated for Dash Cam use.

Video Storage Capacity

Refer to the table below for the recording capacity for different card capacity and some of the recording resolution.

Resolution	8GB	16GB	32GB	64GB	128GB
2304x1296 30P	45 mins	90 mins	180 mins	360 mins	720 mins
1920x1080 30P	50 mins	100 mins	200 mins	400 mins	800 mins
1280x720 30P	70 mins	140 mins	280 mins	560 mins	1120 mins

Battery Information

Although primarily designed for in-car use, the device can operate from its built-in battery for up to 12 minutes. Please note, the power usage would depend on day/night recording and resolution setting.

The device will charge the battery whenever power is detected through the USB port. The device will take about 180 minutes to charge completely.



NOTE

Please ensure that the battery is fully charged before using it for the first time. To extend the battery life, fully charge the device once every 3 months. The battery life will degrade over a period of time especially when the device is exposed to high temperature.

Power On



NOTE

When connected to a car charger with power, the device will automatically power on and start recording.

1. Ensure the USB Charging Cable is connected to the USB car charger.
2. Plug in the USB car charger to the car's cigarette lighter port.
3. Connect the other end of the USB charging cable into the micro USB port found on top of the GPS mount bracket.
4. Connect the USB cable from the side of the GPS mount bracket into the micro USB port found on the device.
5. The device will power on automatically when the car supplies the power to the device.
6. The red dot on the screen will start flashing and recording starts automatically.

At other times, press and hold the power button for at least 3 seconds.



NOTE

Be sure insert the SD card before powering up the device. Format the SD card before you start recording for the first time.

Power Off

When the car's engine is turned off, the device will automatically turn off in a few seconds.

At other times, press and hold the power button for at least 5 seconds to turn off the device. Do not eject the SD card immediately to prevent damage to the last recorded file.

If you wish to switch the device back on, press and hold the power button for at least 3 seconds.



NOTE

Only use the USB Car Charger Adaptor and USB Charging cable that comes with your device. Any other adaptor might damage the device.


Record Mode



NOTE

To record a video, ensure that a valid micro SD card (not supplied) is inserted in the given slot. Also note, that inserting/removing the SD card when the device is recording causes the device to shutdown and in worst case malfunction.

Recording

When connected to a car charger, the device automatically goes into the record mode and starts recording. The  icon will display on the screen.

A red dot icon and a recording timer indicates that the device is recording. To stop recording, press OK and the red dot disappears, indicating that the recording has stopped.

Emergency Recording

An Emergency Recording is triggered when the Menu Button is pressed or when the G-Sensor registers an impact while recording. Emergency Recordings create locked files that are not overwritten by Loop Recording. Emergency recording will only last for 30 seconds.

Snapshot

While the device is recording, press DOWN button to take a quick snapshot. The photo resolution is 1920x1080. If you wish to take a higher resolution photo, you will need to stop the recording and press DOWN button. You can only take a snapshot every 5 seconds.

Playback

While the device is not recording, you can view and play recorded files. Press UP button when the device is not recording to enter Playback mode.

To delete a file, you will need to access Delete option in General Settings menu. You can delete individual file or delete all at once in the selected folder.

Record Settings



NOTE

Please note, you cannot access MENU when the device is recording. To access the Menu, you will need to stop recording by pressing OK.

In record mode, press the MENU button to access the record menu settings. Press twice to display the General Settings menu. Press the relevant UP and DOWN keys to scan through the various settings and then press OK to select or confirm selection.

Press the MENU button to return and exit the Menu.

Setting	Description
Video Resolution	Set the recording resolution. The maximum resolution is 2560x1080. Higher resolutions will give you a sharper image, but take up more memory on the card.
Image Quality	Choose between the options - Super Fine, Fine, Normal - to define the detail in the recordings.
Loop Recording	Use this option to set the recording duration for each file. If you choose the option 'Off', the duration of these recorded files will be around 20 minutes. The files will not be overwritten on the SD card.
Audio Recording	Use this setting to enable or disable audio recording
Stamp	Use to display or hide the date, time and car plate stamp in the recorded files.
Anti-Flicker	Under this setting you have the option to choose between Auto, 50Hz or 60Hz. Select the relevant option and press OK to save the setting.
WDR	Turn on/off the Wide Dynamic Range (WDR) feature to improves the overall exposure throughout your entire image.
Exposure	Set the brightness sensitivity for better effect in different lighting condition

Camera Alert	Turn on/off the Speed Camera/Safety Camera/Red Light Alert.
Overspeed Alert	Setup an alert to warn you when you are driving over a speed limit defined by the user.
Headlight Alert	When driving in a low light environment, it will alert you to switch on the headlight.
Driver Fatigue Alert	Set up a reminder for you to take a rest after a long drive.
Forward Collision Alert	This option alerts you when it detects a possible front collision.
Front Vehicle Departure Alert	At the traffic lights when the vehicle in front moves, this option will alert you.
Lane Departure Alert	This option alerts you when the vehicle is moving into another lane.
Motion Detection	Enable this setting to allow the recorder to start recording when it detects movement. The motion detection will switch off each time the device switch off or reboot.
Park Mode	Parking Mode is off by default. You can switch it on to allow G-Sensor to detects strong vibration and start recording for the parked vehicle. The device will only turn on for about 30 seconds each time it wakes up. Parking Mode only works properly if the battery has enough power.
G-Sensor	This feature detects significant or sudden movement and automatically locks the current recording.
Viewing Mode	Choose to either have Live View or the speedometer displayed on the LCD screen.

Playback Mode

In Record mode (when the device is not recording), press the UP button to enter Playback mode. The device stores video and photos on the SD Card. Playback mode will allow you to review the saved video and photos and playback the video with sound.

The device will display two folders. You can choose Event Video to view Protected/Locked video or Normal Video to view General Record File. All snapshots can be found in the Normal Video folder.

Choose which file you want to preview and press OK button to view or play the files. You can press UP or DOWN button to toggle to the previous or next file. Press OK button to pause the video or MENU button to return to files selection.

To delete a file, you will need to access Delete option in General Settings menu. Select a file you wish to delete and press OK button to reveal the options, Delete this file, Delete all files.

Press MENU button to return folder selection page and press again to return record mode.

General Settings

In record the mode, press the MENU button twice to open the general settings menu.

Setting	Description
Date & Time	Change the date and time by using the relevant UP and DOWN keys, and then press OK to confirm.
Time Zone	Set the time zone for GPS to get the correct time setting for the device.
Daylight Saving	Enable or disable daylight saving time.
Car Plate Stamp	Edit the car plate stamp.
Auto Power Off	Set the time duration to automatically power off the device when powered by internal battery.
LCD Auto Off	Set the LCD display off timer. Always On to keep the LCD display on.
Beep Sound	Turns the sound on or off for each time a button is pressed.
Storage Information	Display the SD card total, used and free space.
Delete	To delete recorded files in the SD card.
Format Prompt	Set up a reminder frequency to prompt the user to format the SD card. This is to ensure the SD card works in optimum condition.
Format	Use this option to format the SD card. (All files will be permanently erased.)
Default Setting	Resets the device to factory settings. Note that restoring defaults will not erase data on the SD card.
Version	Display the device firmware version.

Connecting to a PC

The iGO CAM 60 can be connected to a PC by using a USB data cable (not supplied). The supplied USB cable is for charging and supplying power only. When the device is connected to the PC, 'Data transfer mode' is displayed on the device's screen.

You can view the SD card contents on the PC. When the device is detected on the PC as an external drive, select to view the Event folder or Normal folder. Select Event Folder to view Protected/Locked video files. Select Normal Folder to view General Record files.

The park mode recording files are saved in Event Folder. All snapshots can be found in the Normal Video folder. Recordings or images arranged in folders according to the specified date.

GPSTrackerPlayer

GPSTrackerPlayer allows you to view the recordings on the iGo Cam 60 and trace them on a map.

iGO CAM Player software is supported on Windows 7, Windows 10 and macOS. Download the correct software designated for different platform.

Installing iGO CAM Player

Download the GPSTrackerPlayer from the Uniden website. You may need to unzip the file using the appropriate archiving software before you can use the player.

Access the Recorded Files

Before playing the recorded files on the GPSTrackerPlayer, ensure that you can access the files easily.

Either remove the micro SD card from the recorder, and access the files on the computer via a card reader.
or

Connect one end of the USB data cable to the recorder and the other end to the USB port on your computer.



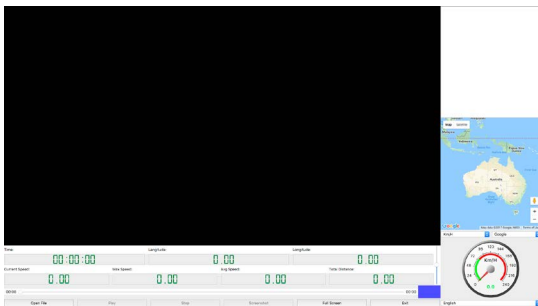
NOTE

The supplied USB cable is for charging and supplying power only. You will need a USB data cable (not supplied) for transferring videos and photos from the device to the PC.

View the Recorded Files

To view the recorded files on the GPSTrackerPlayer, follow the steps below:

1. Start the GPSTrackerPlayer (i.e., double click on the iGO CAM Player icon on your desktop, or click windows start and search from the program listing). Ensure that the PC is connected to the internet to view the map screen.
2. Click on the option Open File and go to the folder that contains the recordings of the iGo Cam 60. You may select and open all files and have it listed in the play list for easier playback.



3. The player will automatically play the first file. If you wish to play the next file, double click on the file name in the play list to start playback.

Click on the 'Screenshot' to take photos of the recording. These photos will automatically save into the PC local folder.



NOTE

GPS Player version is subject to change without notice. See Uniden website to download the latest GPS Player.

Special Features

GPS

The iGo Cam 60 comes with GPS, allowing your device to automatically sync the time with GPS. Ensure to select the correct time zone and also enable Daylight saving if needed.

GPS also allowing your videos to be geo-tagged. Please ensure that the GPS bracket is fitted onto the device ensure the device is able to detect the GPS signal. You can view the recorded videos on the GPSTrackerPlayer and trace them on a map.

Camera Alerts

The iGo Cam 60 has the ability to alerts the user when there is a fixed Speed/Red Light/Red Light-Speed or Average Speed Camera.

For this feature to work, please ensure that the Menu option, Camera Alert, in the Record Settings menu is turned on.

When the vehicle is close to any of the fixed cameras, the LCD will display the camera alert icon along with specific information. This information will include the distance from the vehicle to the camera, the specified speed limit and the current speed of the vehicle. The display is accompanied by a voice alert.

The camera alerts will not work when the device loses the GPS signal.

ADAS

ADAS includes the following 4 functions: Headlight Alert, Forward Collision Alert, Front Vehicle Departure Alert and Lane Departure Alert. Ensure to follow the steps listed and read the notes below to get the most out of this feature.

The ADAS detect will not function when the resolution were set to HDR 1920x1080 30P.

Please Note:

- ADAS Alerts will be limited in poor visibility or where there is inconsistent or faded road markings.
- ADAS best work when the iGo Cam 60 is pointed 10° below eye level and the bottom of the Live View screen is recording part of the car.
- ADAS Alert features is best suited for drivers who spend time on long roads who are worried about falling asleep at the wheel – truck drivers, etc. The feature is not suited for drivers traversing short roads in city areas where deliberate lane changing is done often.
- It is NOT a substitute for careful driving and paying attention to the road.

Troubleshooting

Listed below are some of the problems and the possible solutions.

General Problems	Possible Solutions
The device cannot take photos or record videos	<ul style="list-style-type: none">• Ensure that the SD card is formatted properly and inserted correctly.• Use the recommended type of SD card (minimum 8GB Class 10)
The device automatically stops when recording	
Video is unclear	Ensure that there are no fingerprints or dirt on the lens. Ensure that the lens is always kept clean.
Dark images while recording water/sky	Adjust the exposure setting.
Colour of the images is not good	Set the 'white balance' setting to automatic.
Cross-stripe interference in an image	This is due to the light frequency. Change the light frequency depending on the light source.
The device crashes/ freezes	Press the 'Reset' button, with a pin, to restart the device.
SD Card Error	Please format the SD card and use recommended card only. Please make sure the SD card is recommended dash cam use.
Display turns off after a few minutes	Please check the LCD Auto Off setting and select Always On.
Memory card is full	Please allow loop recording to overwrite older recording files or delete unwanted files including emergency recordings.
Camera feels warm during operation	It is normal for the camera to get warm during operation. Please bear in mind that the if the camera is exposed to high temperature for a long period of time, it might fail to boot up. Cool it down and try again.
The recorded video doesn't show mapping information on the GpsTracker Player.	Please ensure the PC is connected to internet.

If you still need help, visit our website or call our customer service.

Specification

Screen Size	2.7" LCD
Sensor Type	1/3" CMOS
Video Resolution	2560x1080/2304x1296/1920x1080/ 1280x720
Photo Resolution	5312x2988/1920x1080
Loop Recording	Yes
Audio Recording	Yes
Viewing Angle	150°
HDR	Yes
GPS	Yes
Date and Time Stamp	Yes
Headlight Alert	Yes
Forward Collision Alert	Yes
Lane Departure Alert	Yes
Motion Detection	Yes
Park Mode	Yes
G-Sensor	Yes
Video Format	MOV
Video Codec	H264
Audio Codec	AAC
Storage	microSD (up to 128GB), Class 10 and above
Power Input	5V 1.5A
Battery Capacity	Li-ion 320mAh
Operating Temperature	0°C ~ 60°C
Storage Temperature	-10°C ~ 70°C
Working Humidity	10 ~ 80%

Warranty

UNIDEN iGO CAM 60

IMPORTANT: Satisfactory evidence of the original purchase is required for warranty service

Please refer to our Uniden website for any details or warranty durations offered in addition to those contained below.

Warrantor: The warrantor is Uniden Australia Pty Limited ABN 58 001 865 498 (“Uniden Aust”).

Terms of Warranty: Uniden Aust warrants to the original retail purchaser only that the iGO CAM 60 (“the Product”), will be free from defects in materials and craftsmanship for the duration of the warranty period, subject to the limitations and exclusions set out below.

Warranty period: This warranty to the original retail purchaser is only valid in the original country of purchase for a Product first purchased either in Australia or New Zealand and will expire one (1) year from the date of the original retail sale.

If a warranty claim is made, this warranty will not apply if the Product is found by Uniden to be:

- (A) Damaged or not maintained in a reasonable manner or as recommended in the relevant Uniden Owner’s Manual;
- (B) Modified, altered or used as part of any conversion kits, subassemblies or any configurations not sold by Uniden Aust;
- (C) Improperly installed contrary to instructions contained in the relevant Owner’s Manual
- (D) Repaired by someone other than an authorized Uniden Repair Agent in relation to a defect or malfunction covered by this warranty; or
- (E) Used in conjunction with any equipment, parts or a system not manufactured by Uniden.

Parts Covered: This warranty covers the Product and included accessories.

User-generated Data: This warranty does not cover any claimed loss of or damage to user-generated data (including but without limitation phone numbers, addresses and images) that may be stored on your Product.

Statement of Remedy: If the Product is found not to conform to this warranty as stated above, the Warrantor, at its discretion, will either repair the defect or replace the Product without any charge for parts or service. This warranty does not include any reimbursement or payment of any consequential damages claimed to arise from a Product's failure to comply with the warranty.

Our goods come with guarantees that cannot be excluded under the Australian Consumer Law. You are entitled to a replacement or refund for a major failure and for compensation for any other reasonably foreseeable loss or damage. You are also entitled to have the goods repaired or replaced if the goods fail to be of acceptable quality and the failure does not amount to a major failure.

This warranty is in addition to and sits alongside your rights under either the COMPETITION AND CONSUMER ACT 2010 (Australia) or the CONSUMER GUARANTEES ACT (New Zealand) as the case may be, none of which can be excluded.

Procedure for obtaining warranty service: Depending on the country in which the Product was first purchased, if you believe that your Product does not conform with this warranty, you should deliver the Product, together with satisfactory evidence of your original purchase (such as a legible copy of the sales docket) to Uniden at the address shown below. You should contact Uniden regarding any compensation that may be payable for your expenses incurred in making a warranty claim. Prior to delivery, we recommend that you make a backup copy of any phone numbers, images or other data stored on your Product, in case it is lost or damaged during warranty service.

UNIDEN AUSTRALIA PTY LTD

Phone: 1300 366 895

Email: custservice@uniden.com.au

Uniden[®]

© 2017 Uniden Australia Pty Limited. v1.1
Printed in PRC